



Maybole

Cob Cottage, Kirklandhill Path, Maybole, South Ayrshire, KA19 8DE

Offers in excess of £210,000





Cob Cottage, Kirklandhill Path, Maybole, South Ayrshire, KA19 8DE

Cob Cottage is a beautiful three bedroom traditional cottage, set on a large private plot, within extensive and well cared for garden grounds, offering panoramic views of the picture postcard South Ayrshire countryside, located only minutes by car from the town centre.

This cottage is truly a special home complete with light filled rooms, traditional and contemporary elements. This summer you won't have to go further than your back door to enjoy a wonderful sunny garden, offering plenty of space to enjoy family gatherings and barbecues; or for the more green fingered, plant a market garden.

The entrance hallway draws you into an elegant dining room with open plan lounge, featuring a wood burning stove, door access to the patio area, a modern fitted kitchen with plenty of cupboard space, integrated appliances as well as room for a dining table and chairs, overlooking the gardens, door access to the patio area. As well as the very generous 30ft dining/lounge area, there are three double sized bedrooms and an inner hallway with linen/storage cupboard. The modern family bathroom has quality tiling, a white three-piece suite, shower over bath and vanity units.

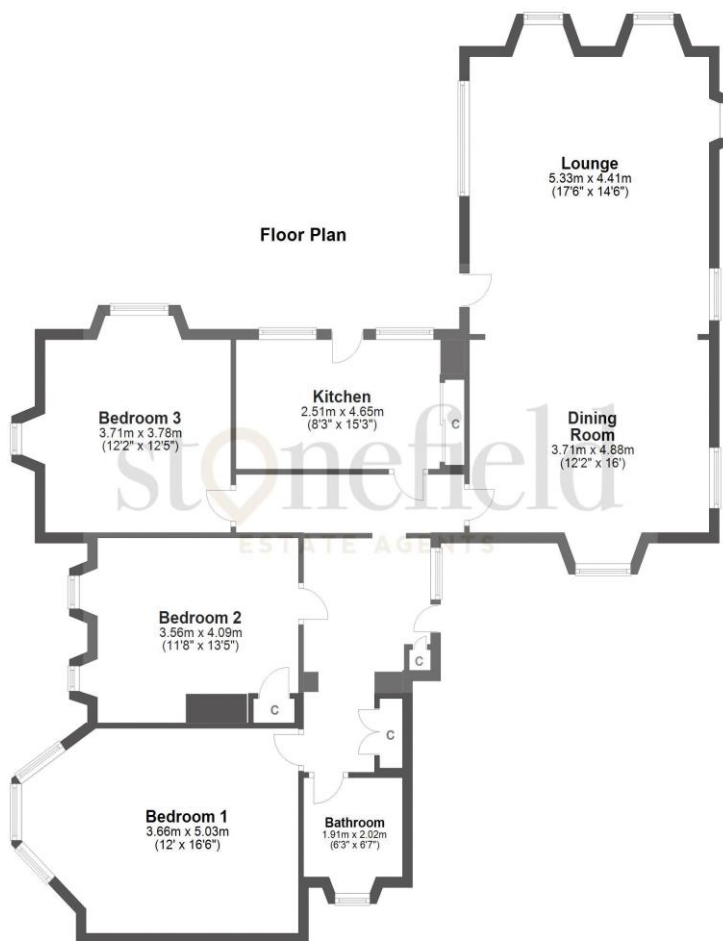
The property has lovely lawns as well as a large driveway, suitable for multiple cars and a detached garage.

Cob Cottage must be viewed to fully appreciate the location and overall quality of this wonderful home. A special property to the market that is guaranteed to generate a high level of interest. A forever home if ever there was one.



Cob Cottage, Kirklandhill Path, Maybole, South Ayrshire, KA19 8DE

Property Ref: 00001543 | EPC: Band E



Plan and measurements are approximate only.
Plan produced using PlanUp.



Dimensions

Lounge; 17.6ft x 14.6ft Dining Room; 12.2ft x 16ft (max) Kitchen; 8.3ft x 15.3ft (min) Bedroom 1; 12ft x 16.6ft (max) Bedroom 2; 11.8ft x 13.5ft Bedroom 3; 12.3ft x 12.5ft Bathroom; 6.3ft x 6.7ft Garage; (No Sizes)



Travel Directions

Upon entering Maybole via the A77 from Ayr, continue along Cassillis Road before taking a right onto Barns Road, and then taking a left onto Culzean Road at the junction. Continue along Culzean Road for approx. 0.4 mile before taking a sharp right onto Cargill Road. Continue forward, turning left onto Kirkland Hill Path. Cobb Cottage sits at the top on the left hand side. There is plenty of parking in the driveway.

We believe the enclosed information and details to be correct however their accuracy is not guaranteed and they do not form any part of a contract. Photographs are for general information, measurements and distances are approximate and floorplans may not be to scale.

stonefield
ESTATE AGENTS

16a Beresford Terrace
Ayr KA7 2EG

T: 01292 501777

E: enquiries@stonefieldayr.com